

135 PER CENT JUMP IN ROAD USE SEEN

That wear and tear on the trunk highways is increasing much more rapidly than automobile registration or highway revenues, is indicated by a comparison of the traffic census taken this year by the Minnesota Highway department and the one taken in 1921. Taking the average daily traffic at 97 points where counts were made both of those years, the increase is found to be 135 per cent. Total registration in 1921 was 332,652 vehicles. The increase in 1928 over 1921 will be a little less than 100 per cent.

The actual traffic increase, however, is much greater than the traffic census indicates, since the census was taken only in the summer. The 135 per cent increase shown by the 1928 count over 1921 is considered by the Highway department as a true index of the growth of summer traffic, but the growth in winter traffic has been much larger. Seven or eight years ago a majority of the motorists put up their cars two to six months while now nearly all car owners drive twelve months in the year.

Wagons and buggies are the only classes of vehicles which show a falling off. Only six per day were counted at the average station in 1928 while thirty-four were counted in 1921. In 1921 they made up 4.2 per cent of the traffic and in 1928 only 0.8 per cent. In 1921 more wagons than trucks were counted, while in 1928 there were eleven trucks for every horse drawn vehicle.

Cars with foreign licenses made up ten per cent of the traffic in 1921 and 20 per cent of the traffic in 1928, while the actual number of foreign cars now is more than four times as great as seven years ago. Buses have more than doubled in numbers but maintain nearly the same ratio to other vehicles, being 1/4 per cent of the total in 1921 and 6-10 per cent in 1928.

A list of 97 points where traffic counts were made in 1921 and 1928 is furnished in a bulletin issued this week by the Highway department. The comparative counts at a number of stations which may be of interest to readers of The Miner are given below:

	1927	1928	Av. per day	Increase in cars
North of Aitkin, ...	325	682	357	
Between Coleraine and Grand Rapids, ...	492	1,452	960	
Between Chisholm and Hibbing, ...	1,204	2,885	1,681	
Between Tower and Ely, ...	202	971	769	

SEPTEMBER BIRTHS SHOW FOUR BOYS AND TWO GIRLS.

Births reported by the Registrar of Births for the month of September show that four boys and two girls were born here during the month as follows:

September 2, to Mr. and Mrs. Frank Moeck, a son.

September 5, to Mr. and Mrs. John Zobita, a son.

September 7, to Mr. and Mrs. Peter Jiacik, a son.

September 16 to Mr. and Mrs. John Erkila, a daughter.

September 18 to Mr. and Mrs. Thos. Thielman, a daughter.

September 21, to Mr. and Mrs. Ivan Tausell, a son.

STORY OF EVENT 236 YEARS AGO IS "FRESH NEWS" TODAY.

All of us know that Christopher Columbus discovered America in 1492 but how many of us know anything about the details of the historic event one October morning four hundred and thirty-six years ago? A description of what took place then was written by an American historian more

than one hundred years ago and it still remains one of the best accounts of the advent of the white man on the shores of the New World that has ever been written.

Knowing little more than that which the school books have told us about the landing of Columbus, that story should be "fresh news" for many of us. Look for the illustrated feature article "October 12, 1492," by Elmo Scott Watson in this issue of The Miner and see if that isn't true!

STORES TO CLOSE AT SIX AFTER OCTOBER FIFTEENTH.

The stores of the city will close each evening at 6 o'clock after October 15 with the exception of the pay day week and the night before a holiday. The agreement to close is being signed generally and the list will be printed next week.

CHURCH NOTES

BETHANY ENGLISH LUTHERAN.
Corner of Camp St. and Fifth Ave.
V. T. Anderson, Pastor.
Services at 8:45 A. M.
Sunday School at 10:00 A. M.

FIRST FINNISH EV. LUTH. CHURCH
Rev. G. A. Aho, Pastor.
English services, 10:30 A. M.
Finnish services, 7:30 P. M.
Sunday School, 9:15 A. M.
Bible Class, 9:15 A. M.
Rev. E. V. Niemi from Thompson, Minnesota preaches at the morning services October 12.

PRESBYTERIAN CHURCH.
Church School, 9:30
Morning Worship, 10:45
Evening Services, 7:30

Rally Day will be observed in the church school next Sabbath, October 13. This is a call to all students and teachers to be present for the beginning of the fall and winter work of this department of the church life. A special program for the occasion will be presented. An invitation is issued to all children and young people to enroll with us if they are not already members of the other church schools of the city.

Communion service will be celebrated at the morning hour of worship. During the month of October, as is our custom, we will hold an evening service. The pastor's address for this service will be "the Insnipid Age". A timely talk for fathers and mothers. The Ely public is cordially welcome to our church life and worship.

MINING DATA GIVEN AT STATE U

Minnesota produced nearly four-sevenths of all the iron ore mined in the United States during 1927 it is shown in the annual Minnesota Directory, 1928, just published by the Experiment Station of the University of Minnesota College of Mines. National production was around 65,000,000 tons, of which Minnesota mines shipped 36,504,854 tons. The 1927 shipments represent a decrease of about 5,500,000 tons under 1926. The basic price of standard ore was \$4.55 a ton, delivered at Lake Erie ports. Standard ore contains 51.5 per cent iron.

More than a third of the ore shipped from Minnesota mines has been treated by crushing, washing, sintering or screening to eliminate waste matter or improve its form for smelting, the report shows. Mines experts point to these figures as showing that mines are gradually getting into deposits of lower grade that cannot be

shipped "straight". Big investments have gone into crushing and washing plants on the ranges in recent years. More than 13,000,000 tons of ore went through "beneficiation" of one sort or another last year before it was dumped into cargo boats at the twin ports.

The report states that the estimated reserve tonnage of Minnesota ore on May 1, 1927, exclusive of non-merchandise, low-grade ore, was 1,262,833,201 tons. Ore that is now non-merchandise amounted to billions of tons, of which approximately 185,000,000 tons is carried on the tax records.

It is to find means of making these ores useful, and therefore an asset to the state as well as to their owners, and the communities in which they lie, that most of the experiments at the Mines Experiment Station are being conducted.

Other figures on the mining industry show that 12,000 men were employed in St. Louis, Itasca and Crow Wing county mines, an additional 8,000 on railways chiefly serving mines, and 2,000 in the shipping end of the ore industry. The value of ore shipped in 1927 was \$90,800,000. The total shipments from underground and open pit mines showed that per man, underground mines produced 1,325 tons per season, and open pit mines 9,187 tons per man. This condition has been brought about by the thorough mechanization of the mining industry.

The oldest iron mine in the state of Minnesota is the Soudan mine, on the Vermilion range, which has been in operation since 1894.

Borah Pays Tribute



Describing Herbert Hoover as "one of the great administrators of all times," Senator William E. Borah of Idaho declared that "the issues of this campaign are every day problems, such as farm relief, cheaper transportation, development of waterways, a public utilities policy, conservation of electric power, and the maintenance of our Constitution as the people had written it."

Discontent Breeds Content

We try to make every boy discontented with his lot, and we achieve the most contented and unified stable country in the world.—Herbert Hoover.

"Hooking" Airplanes

On aircraft carriers wires are stretched across the deck of the ship. An airplane landing on such a deck is equipped with a long hook which is dropped from the plane and catches in the wires, thus bringing the plane to a stop.

Responds to Cheers



Herbert Hoover responds to the cheers of the vast throngs that greeted him on his tour through New Jersey. He was greeted with enthusiasm everywhere, especially in the so-called Democratic strongholds of Mayor Hague in Hudson County.

Tariff Came First

The first of our policies which have given security and expansion of employment has been the enactment of the protective tariff. — HERBERT HOOVER in his Newark speech.

The Farm Minded

For a farm minded man or woman, farming is not merely the most soul satisfying life but the only life worth living.—Farm and Fireside.

Great Canadian Region

The Canadian Northwest is generally meant to include Saskatchewan, Alberta, British Columbia and Yukon Vancouver is the western port for the Canadian North.

Uncle Eben

"You can't believe all you hear," said Uncle Eben. "Mighty few so-prones is as good as what de radio announcer says."—Washington Star.

Fun for Photographers

Butterflies and moths are not only exceedingly beautiful, but the various stages of the development are most interesting to observe, says Nature Magazine. They furnish wonderful opportunities for one "addicted" to a camera.

MISS MINNESOTA AND MISS WISCONSIN chose our Jewellery Store for the JEWELRY

which they will wear Monday and Tuesday, Oct. 8 & 9 at the **ELCO THEATRE.**

See the State's Most Beautiful Girl's Wear Our **Jewelry**

This is Your Only Opportunity! **Be There!**

THE SAVOLAINEN CO.
The Leading Jewelers.

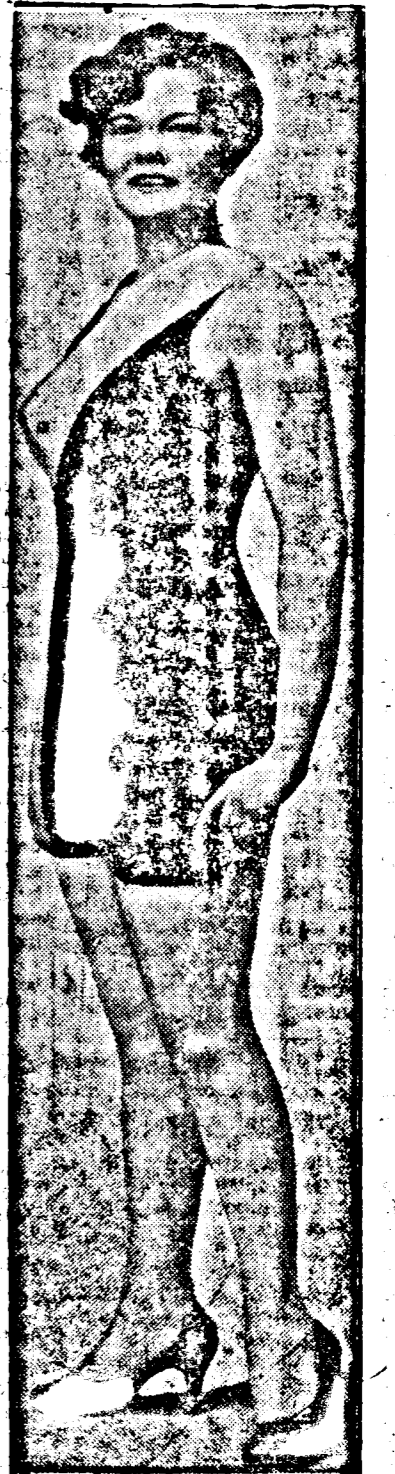
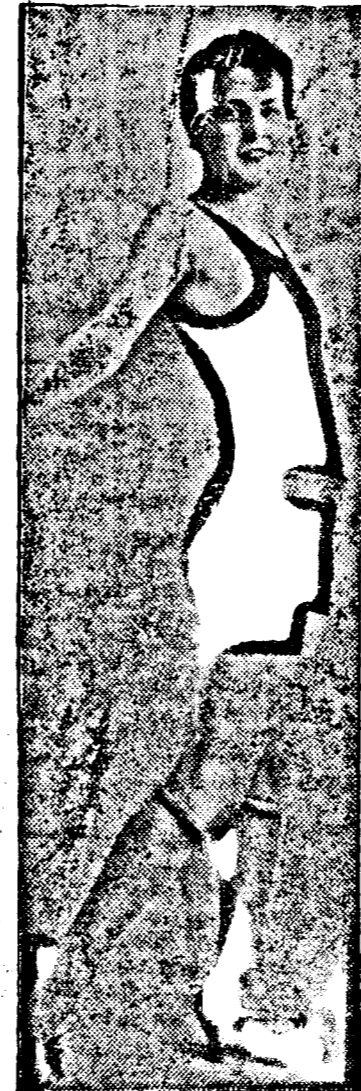


SEE--MISS WISCONSIN AND MISS MINNESOTA

Model Our New Fall **GOWNS, HATS, COATS, FUR COATS**

at the Elco Theatre, Monday and Tuesday October 8 and 9.

We have just received our New Fall Stock and we are offering Style and Quality at Moderate Prices.



Be sure to see these beautiful girls wear our beautiful clothes

NANNIE'S STYLE SHOPPE.

MISS MINNESOTA AND MISS WISCONSIN

appearing at the Elco Theatre, Monday and Tuesday, Will model our

Queen Quality SHOES AND EVER-WEAR HOSIERY

which one they select in Fall Footwear.

See the Most Beautiful Girl in Minnesota. They will appear in a Style Revue.

MORRIS BOURGIN.

