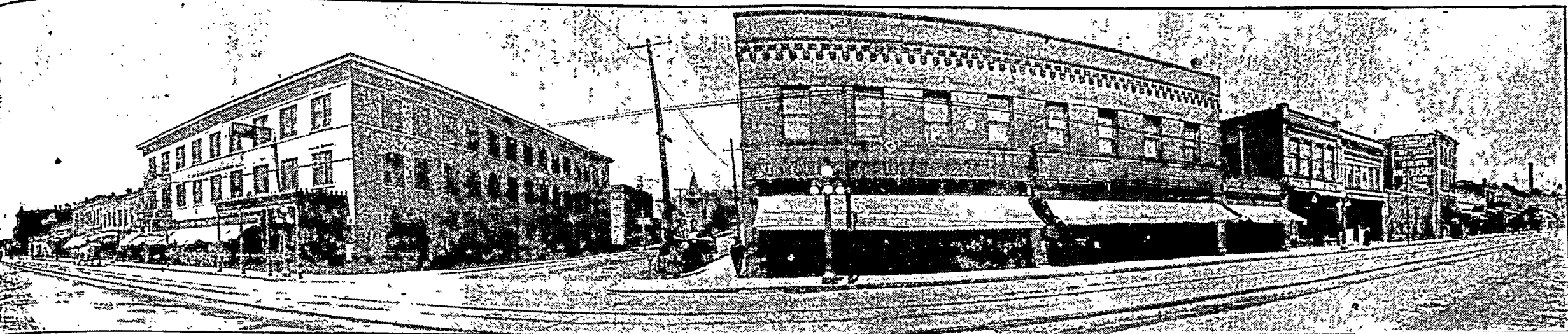


WEST END: A COMMUNITY OF BUILDERS

ONE VIEW OF SUPERIOR STREET IN THE WEST END BEFORE DAY'S TRAFFIC BEGINS



By FREDERICK H. WEINBERG.

It would be difficult to find a community composed of more real, energetic and enthusiastic business men than are located in the West End.

Why that section of the city should be called West End is somewhat of a mystery to those who do not know that West Duluth, formerly a village by itself, and under that condition, what is now West End was at that time the western extremity of Duluth.

From the Point of Rocks—that mound of massive boulders which fascinates tourists to the Zenith City—to the Duluth, Missabe northern road's ore docks is the West End. Within those boundaries may be found an unusually busy business section with stores and buildings which reflect credit on Duluth.

Undeniably the business men of the West End, working for advancement of their section through their Commercial club, have accomplished much.

THEIR latest achievement was the selection of the site for a new branch library building which will be erected on the northeast corner of Twenty-third and West and Second street.

It was on the recommendation of the club's building committee that Mayor Prince negotiated for the purchase of the lot for \$4,200. It is 248 feet and is regarded as the most convenient site available. West Enders were pleased with the announcement that Mayor Prince will make a donation of \$20,000 from the Carnegie fund. The city council will be asked to appropriate funds for maintaining the institution.

A notable example of West Enders' men's energy and "push" was given Friday night when they enthusiastically conducted a street festival in which a Queen of the May was crowned amid the plaudits of an immense throng that followed the parade and procession along West Superior street.

Entertained Just for "Being Good."

Another entertainment was given to the business men for the benefit of the "kids" last Halloween. In addition to a bonfire, distribution of candy and a band concert, the youngsters reveled in pride at the opportunity to keep out of mischief when the royal treatment was to be had for being good.

At present the school boys and girls are engaged in a cleanup-and-cleanup crusade, instituted by the business men, who formed the West End

Beautifying club with L. A. Simonson as president.

Under the direction of K. A. Franklin the youngsters of the several schools have been divided into groups with captains at the head of each group. Later, inspections will be made of the districts and prizes awarded to guardians of the cleanest and brightest spots. The business men have contributed generously to make the campaign worth while. A committee composed of Messrs. Simonson, Franklin and Width will announce the prize awards at the end of the campaign.

What West End needs more than anything else at present is an adequate police and fire station. The present quarters are totally inadequate. Another need, which might be placed in the proverbial "crying" class, is a police emergency automobile.

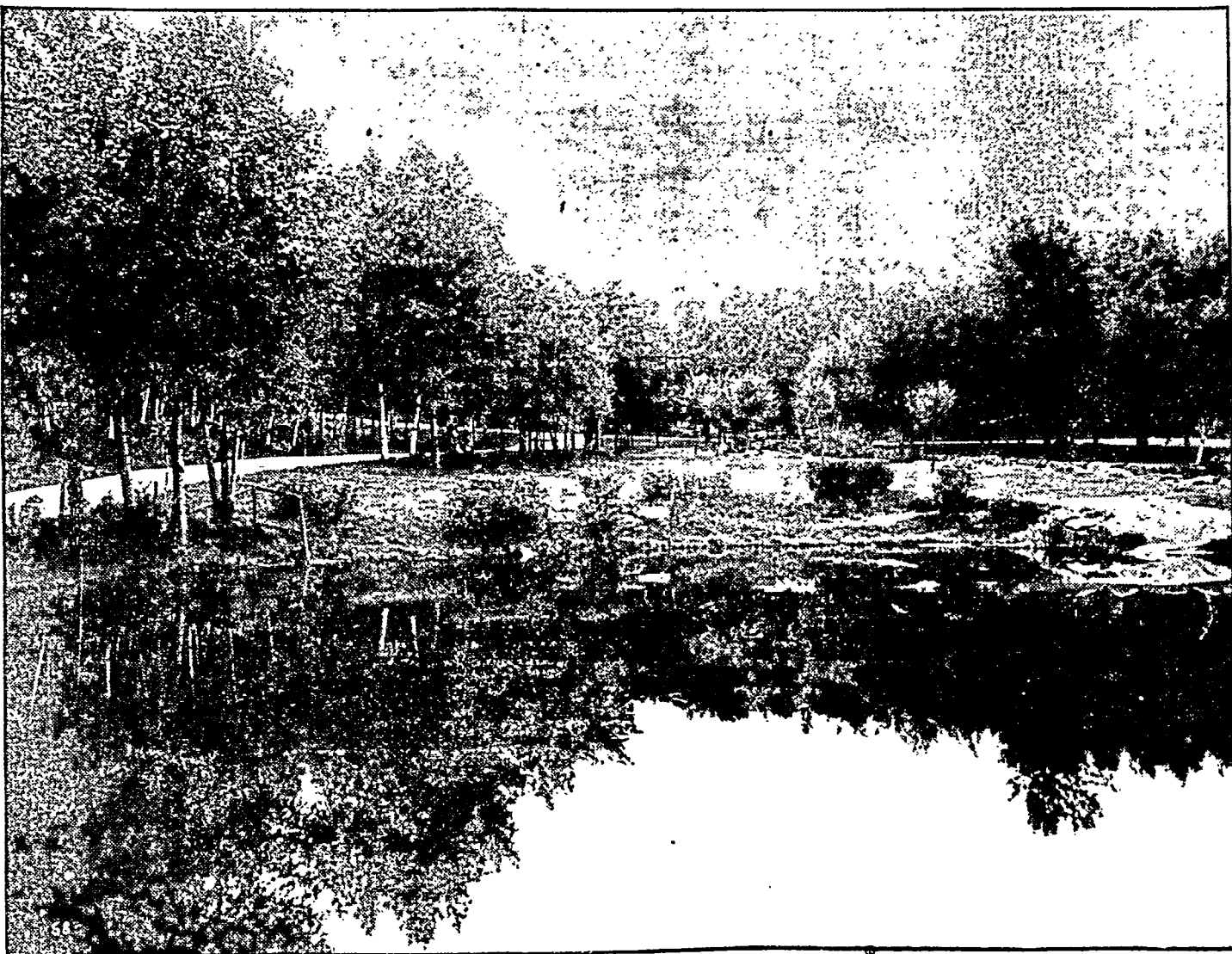
West Enders contend that inasmuch as they are nearest to the railroad yards, docks and elevators, where accidents frequently occur, a police auto stationed in their section would be advantageous.

Seek Freight and Passenger Station.

A freight and passenger station also is sought by the business men, who, after two years of agitation at length saw the start of construction on the Soo station at Twenty-fourth avenue West. Work was discontinued last fall but West Enders are not disheartened as they expect the improvement to be completed at an early date. At present they have to pay double drayage for shipments over the Soo line.

After West First street from Nineteenth to Twenty-ninth avenues is paved, residents will recognize that their cherished desire of more than two years will have been granted. Petitions seeking this improvement as well as paving of Twenty-second avenue from Superior to Third streets

LINCOLN PARK, A WEST END BEAUTY SPOT



have been presented to the city council. Despite failure of the commissioner to consider favorably the propositions the West End residents aim to persevere.

These few things represent what West Enders want. What they actually have is the envy of the entire city. Included in their possessions is Lin-

coln park, one of the most beautiful recreation spots in Duluth. Situated on Third street, with an inviting entrance at Twenty-fifth avenue, Lincoln park undoubtedly is vis-

ited by more downtown residents than any other park in the city. To go there once is to plan another trip. Shooting rapids, cascades and cool retreats abound.

ANOTHER VIEW OF WEST END'S MAIN BUSINESS THOROUGHFARE

