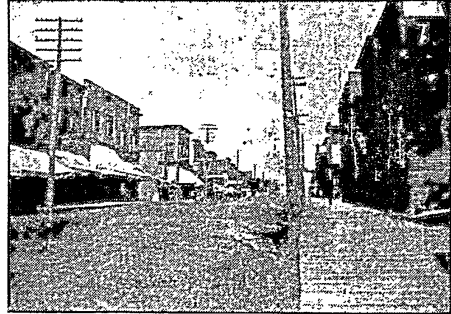


EVELETH, HOME OF THE FAYAL, GREATEST IRON ORE PRODUCER IN WORLD, ENJOYS BUSINESS ACTIVITY UNEXCELLED BY ANY NORTHERN MINNESOTA TOWN



VIEW OF GRANT AVENUE, EVELETH.



Prominent mining man of Eveleth and member of St. Louis County Poor Board.

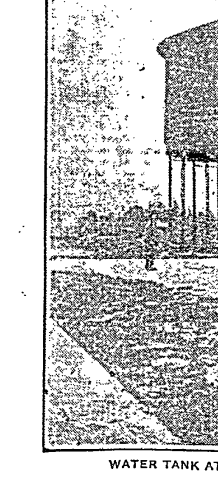
J. H. HEARING, here as elsewhere. It is a policy that deals fairly, and even generously, with everybody that comes in contact with it. This is true of the individual and of the community. It is a policy of construction and encouragement in a multitude of ways as the occasion may appear to demand, or wisdom suggest. The strong arm of this great corporation exercises an influence for good in many ways beyond the mere paying out of its good wages as conditions will warrant. One may travel from Fly to Lover and not hear a harsh word or complaint of the methods of the Oliver Iron Mining company. This is also true of other mining companies, but the mining division of the steel corporation is conspicuous to the extent of its operations, and therefore an object of special attention always.

Two Thousand Men at Mines. The mines about Eveleth are just now giving employment to about 2,000 men, possibly more than that. The big new open pit at the Fayal is not yet in commission and will not be opened extensively this year. The mine is opened up above or under four forties. The area covered by operations at surface, on the Adams mines at least, the underground operations are plainly indicated by shafts and cuttings and railway tracks, and the open pits are of course in plain view.

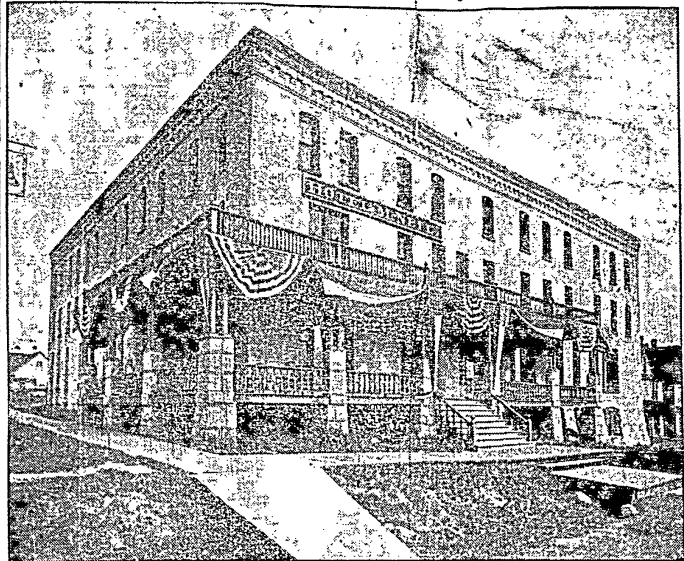
Moved Village Off From a Mine. The village of Eveleth some years ago was moved in order that the Spruce mine might be developed. The Spruce and the Adams are adjoining properties and being under the same management are now treated practically as one mine. The properties are connected by drifts underground. Adams ore may be hoisted through Spruce shafts, or vice-versa. The Clonquet mine is another nearby property. These as well as the Fayal mine are controlled by the Oliver Iron Mining company. The policy of this company, which controls mines at many of the range towns, is the same



Village Trustee, Sparta.



WATER TANK AT IRON JUNCTION.



HOTEL McNEIL, EVELETH.



Representative of the 49th legislative district, editor and proprietor of the Eveleth Star.

to extend the mains two one-half miles. The new waterworks system has cost about \$20,000. The electric light system of Eveleth is owned by a private corporation. Eveleth is experiencing a very gratifying building growth, and in this connection extensions of the water and sewer systems are being made as needed.

Well Drilled Fire Department. Eveleth has a well drilled and well equipped volunteer fire department, which Alderman William Murray chief. Eveleth has outgrown its present city hall and is to have a new one, the site for which has been secured on the corner of the hall on Pearce street, between Grant and Adams streets.

Administration of Eveleth. The officials of the City of Eveleth are as follows: Mayor, George Maxwell; aldermen, Matt Pretter, William Murray, Gleason, Frank Mattson and Patrick McGory; city clerk, Louis Larson; treasurer, Timothy Shue; assessor, J. Munik; attorney, N. B. Arnold, and engineer, Clarence Abbott. Patrick McGory is chief of police and Prince is judge of the municipal court.

The High School Building. A high school building, costing \$21,000 has just been completed. It was built by district No. 20 of which J. H. Hearing is president, director, Walter Smith, clerk and George Dormer, treasurer. The building, together with the site and the hill two blocks from the center of the city, is being given to educational matters. The building occupies a site on top of the hill two blocks from the center of the city. The First National bank of the city was established five years ago. G. W. Whitman is president and J. W. Cornwell is cashier. The directors are all men of prominence in business or

FACTS ABOUT EVELETH, MINN. City has a population of 6,232, and is growing steadily and substantially. One hundred and forty thousand dollars is distributed in wages every month. Two of the largest iron ore producing mines in the world are located there, the Fayal and the Adams-Spruce. Extensive iron ore deposits in the vicinity have been proved by drills but not yet opened up. Two fine railroads, the Duluth, Missabe & Northern and the Duluth & Iron Range. Has two good banks and many strong business concerns. Has a new high school building just completed that cost \$21,000. Has an extensive agricultural region that is tributary. Has an enterprising and go ahead class of business men.

the professions. Wealthy. They are G. A. Whitman, Max P. Shapiro, Dr. W. E. Harwood, O. D. Kluney, Senator E. B. Hawkins and J. W. Falk. The capital and surplus is \$52,000. The capital and surplus is the largest of any bank on the eastern Mesaba, and it is the oldest national bank on that range. Mr. Whitman, the president of the First National bank of Eveleth, is a well known and prosperous man. He is intimately acquainted with the



President, Village of Sparta.

banking business and is one of the progressive men of the range. The First National of Eveleth enjoys a large business. The Miners' National bank of Eveleth was established in 1903, with a capital of \$25,000. Its president is W. J. Smith, a young man who has already made his mark in the banking business. Mr. Smith started in the banking business at Bellevue, Ohio, and when he was asked to take the presidency of the new Miners' National was occupying the position of cashier of the First National of Eveleth. Previous to that he had been in the First National of Tower, The Miners' National, which is less than two years old, shows a surplus of \$1,400, and its business is steadily increasing. The institution is, in fact, doing a very prosperous business at the present time. The officers of the Miners' National bank are: President, W. J. Smith; vice-president, James A. Lobb, and cashier, Leo Shapiro. The directors are the officers, with the addition of R. B. Bailey, Dr. J. W. Johnson, J. C. McGilvery, N. B. Maxwell and Dr. F. W. Bullen.



Village Trustee, Sparta.

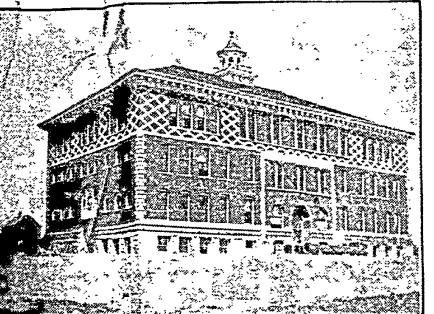
Many Lakes Near Eveleth. Eveleth is fortunate in having a number of beautiful and well wooded lakes in its vicinity. Among these are Fly lake, St. Mary's Horseshoe, and Pleasant lake. A delightful outing for a day or a week according to one's time and disposition may be had at any one of these resorts. They are reached over good roads and people are as certain to find the best of weather to put them in had condition. The road between Eveleth and Virginia is certain to be in good condition, and it is much traveled. One must drive over a good road all the way between Eveleth and Hibbing. A Whitman made the trip in a carriage a few days ago, and says that the road was good all the way.



Representative from the 49th legislative district, resident of Sparta, and business man of both Sparta and Eveleth.

Settlers Opening Up Lands. Everybody in Eveleth that feels the promptness of public lands in a most important way are interested in the possibility of agriculture in the territory tributary to the city. Many are opening up lands and a number of excellent farms have been developed. For example, when Buehler has a large farm, three miles west of Eveleth. He has eighty acres cleared, has plenty of machinery for operating the farm, horses, cattle, poultry and hogs, and a \$2,500 house. There is much to be expected at Eveleth in the agricultural resources tributary to it, and the necessity of improved roads, and more of them, to assist in the settlement of the lands, is a matter of considerable interest at present. The people in the northern part of the county feel that the development of wild lands is certain to rapid and the results of great importance. If a liberal and wise policy of road building is conducted for the next five or ten years, the people in the northern part of the county feel that the development of wild lands is certain to rapid and the results of great importance. If a liberal and wise policy of road building is conducted for the next five or ten years, the people in the northern part of the county feel that the development of wild lands is certain to rapid and the results of great importance. If a liberal and wise policy of road building is conducted for the next five or ten years, the people in the northern part of the county feel that the development of wild lands is certain to rapid and the results of great importance.

Phone Company Seeking a Home. The Mesaba Telephone company is seeking to get a home of its own in Eveleth, on much the same basis as it has established itself in Virginia. F. E. Lester is the district superintendent and his headquarters is at Eveleth. His territory embraces Eveleth, Virginia and Hibbing. He has a large staff of men and a new building will soon be completed. Cable is on the ground for taking the



NEWLY COMPLETED HIGH SCHOOL BUILDING AT EVELETH.

place of most of the present individual wires in use. The company also expects to add about two miles of pole line in each of the cities of Virginia and Eveleth, to take care of the demands from new additions. The company to rebuild the toll line between McKinley and Sparta. Four thousand feet of 3-wire aerial cable has been ordered for Birchbark, and is being strung between the exchange there and the business section. The Mesaba Telephone company has just installed five phones in the new village of Aurora. These telephones are connected with the Duluth exchange. The company also intends to bring an additional trunk circuit between Eveleth and Virginia. Telephone service is free between these towns and demands on it are extensive. It is not uncommon for 500 calls to be made between the two towns in a single day of ten hours. There are now six circuits between Eveleth and Virginia. The Mesaba Telephone company is a very progressive institution. It is keeping up with the times at every stage, and is installing the most modern equipment known to the business for the use of the range people. There are 175 telephones in Eveleth. Eveleth has two weekly papers, the Eveleth Star and the Eveleth Mining News.

METROPOLITAN STORE IS PEID & DAWSON'S

The Reid & Dawson company is the name of the firm that conducts the "Eveleth High Department Store." They occupy a building fronting 732 feet on Grant avenue in Eveleth and 25 feet deep. It is one of the best lighted stores to be found on the Mesaba range and the company carries a heavy and well assorted stock. It consists in part of ladies' cloaks, ladies' suits, underwear, millinery, boys' clothing, linens, etc. These lines are artfully displayed in a large balcony in the rear of the store. The balcony increases the floor space materially. The office of the company is found there also. The company in addition to clothing, linens, carpets, rugs, oil cloth, etc. The Reid & Dawson company is prepared to furnish a house from cellar to garret. The firm also carries full lines of boots and shoes and men's furnishings goods. There is a metropolitan store in every respect.

FIRST CLASS STABLE HAS CHAS. JEMORE

Charles Jemore, the Eveleth liveryman has a first class stable containing 25 head of horses and a complete outfit of vehicles of all kinds, including carriages, hacks, a bus and a hearse. Mr. Jemore is said to have the best winter outfit of vehicles for his livery business of any liveryman on the range. He has been 8 years in the business at Eveleth and during that period has been mayor for three terms. He is a popular and substantial citizen of the big mining town. His stable is located on Grant avenue, and it does a brisk business.

MR. TURNQUIST, PHOTOGRAPHER

A. M. Turnquist, of Eveleth, is a pioneer photographer of the Mesaba range. He has an extensive list of views of mines, logging scenes, and other pictures of the region for miles about the city. Mr. Turnquist also has a studio at Hibbing.

SAVES DOCTORS' BILLS.

"I received \$3 for Orangeburg, Tenn. They have saved me a lot of money. I have been cured of colds, grip, headache and fever." J. C. Swartz, Hampton, Tenn.



City Clerk of Eveleth, and active in municipal affairs of that community.

VILLAGE OF SPARTA MAY BE MOVED

Much Ore Believed to Lie Beneath Site of the Town.

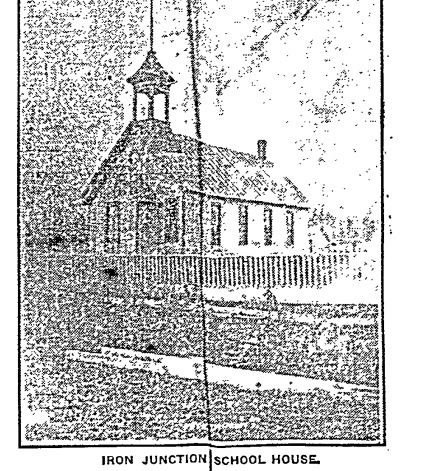
The village of Sparta on the Mesaba range, two and one-half miles east of Eveleth, has a population of 860 and it is altogether probable that the town will be moved to some other location near the present site. It has met with the experience of Eveleth in its earlier days. Ore has been found under the townsite and this will make it necessary to remove the buildings. All last winter drills might have been seen at work in the main streets and all seeking to determine the extent of the

Continued on Page 5.

D. M. MOUSER, Recorder, Village of Sparta.



Recorder, Village of Sparta.



IRON JUNCTION SCHOOL HOUSE.