

Photo by Maher.

M. S. AND B. J. COOK BLOCK.

### BUTTE COALITION MINING COMPANY

The Butte Coalition Mining company was organized this year to take over the properties at Butte that had been owned by the Heinze interests there. These included many mining claims, and a large number of fractions well selected and producing about 3,000,000 pounds of copper per month. The company has as large an area of mineral ground as any of the larger companies at Butte aside from the Boston & Montana and the Anaconda. Its claims and fractions numbered some 64 at the time of organization, and it has succeeded in adding to these somewhat by its settlements with other companies since then. It has a number of town lots mineral rights, on one of which its Glenary mine is situated. Its Harus group, including the Harus mine, the Johnstown and Minnie Healy, together with interests in the Shobonish and Tramway, all of which it can mine under later agreements, is a compact group in the center of the widest mineralization in the camp. Surrounding such rich mines as Pennsylvania, Michael Davitt, Silver Bow, Leonard, West Colusa and Comanche. Its Snapper group is surrounded by large and excellent mines and is a very important property. It also has a large interest in other mines that will prove important with sufficient exploration.

The mines of this company are now undergoing a complete reconstruction preparatory to largely increasing their daily output of ore, they are being developed on a larger scale than ever, and more development is being carried along ahead of current production. New shafts are going down, new machinery is being installed and started up, new drifts and crosscuts run to open ore bodies that had been found by some company or other in the days when nobody dared tell any other company what he had found.

Operative costs at the Butte Coalition will never be as high as under the Heinze regime, for there are great ways to save, when one's neighbors are friendly, which neither Mr. Heinze or the Amalgamated were able to rubree. In a year from now the Coalition mines should be able to produce up to 3,500 or 4,000 tons per day, when they will take their place among the largest copper mines of the country.

The settlement of the notorious warfare carried on in Butte between the forces of the Amalgamated company and A. F. Heinze was brought about largely through the intervention of Mr. T. F. Cole, of Duluth, who was able to settle materially in an agreement that took the Heinze mines into the control of the Coalition company. Perhaps no single action ever taken in mining affairs did more to allay serious trouble and to settle difficulties that had seemed absolutely beyond the possibility of clearing up. It is almost inconceivable that such a tangle could have arisen, or could have been carried on with such vicious energy as was this war between the Heinze interests. Montana was torn into two warring camps, its public life made a mockery of honesty and justice. Its courts and legislators prostituted, and a fat feast provided for the worst elements of society. But all this has been changed and mining interests here are now peaceable, busy, each one with his own affairs. To those men, responsible for this change, Butte and the mining industry owes much more than it appreciates.

**THOMAS THOMPSON CO.**  
Fine facilities for the handling of goods that must be promptly and carefully handled marks the establishment of the Thomas Thompson company, one of the big houses in the wholesale fruit and produce business of Duluth and the Northwest. The business of the house has been large and growing for many years—it having been established in 1891—but the increase of business of 33 per cent this year over the total for last year shows an expansion which is uncommon even in the big development in Duluth commerce.

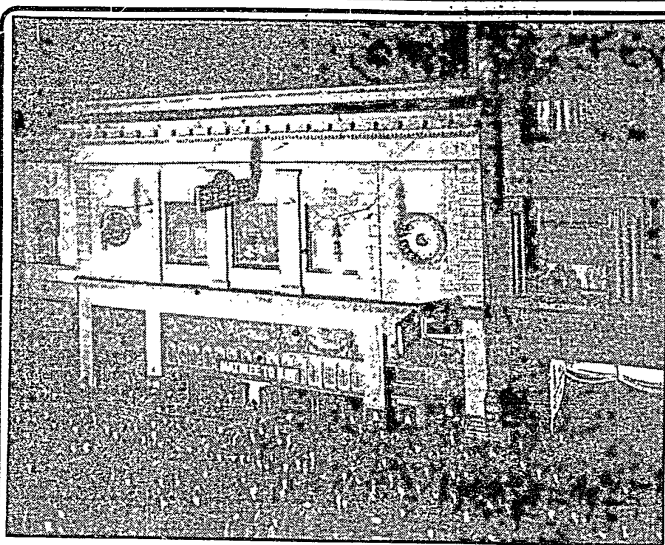


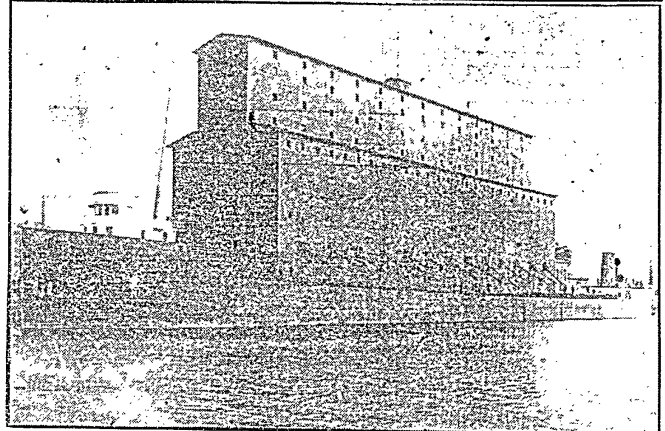
Photo by Maher.

### The BIJOU THEATRE

Duluth's Popular High Class Vaudeville Theatre

### AMES-BROOKS COMPANY,

Exporters and Shippers of Grain.



Steamer B. F. Jones loading in Duluth, Oct. 8th, 1906, the largest cargo of wheat ever carried on salt or fresh water—370,273 bushels of macaroni wheat for export to the Mediterranean.

The Thompson company has a wide reputation throughout the Northwest for promptness and secure doing and the connection of the company is so extensive as to keep six traveling men busy on the road. These cover the northern Michigan, Wisconsin and Minnesota and the territory is being rapidly extended. Thomas Thompson is president of the company. L. L. Culbertson, vice president; Robert

### ZENITH PAPER COMPANY.

The only house at the Head of the Zenith Paper company, which is one of the most important general paper houses in the Northwest. The company has been doing a constantly increasing business since 1899 and now

has five men on the road looking after the interests of a very extensive trade. The lines handled include all kinds of paper and stationery and the home establishment is extensively stocked to meet the varied demands of a trade that must be supplied promptly. F. R. Leslie is president and treasurer of the company. J. J. LeFournier vice president, and C. J. McBride secretary.

## Edison Records

Phonograph Supplies

Call and hear some of the Latest Selections.

### B. F. HATHAWAY

Agent,  
200-201-203 Alworth Building,  
DULUTH, MINN.

Pioneer Dealer in Duluth, carry full line of all Edison's latest records. Handle both Edison and Victor machines. Strict attention given to out of town customers and all mail orders.

THOMAS A. EDISON  
Duluth Representative  
**B. F. HATHAWAY**  
The Pioneer Dealer.

## LANE MacGREGOR & CO.

GENERAL AGENTS OF

### MARYLAND CASUALTY COMPANY

MERITS COMPLETE CONFIDENCE

BUSINESS OF BROKERS IN ALL CASUALTY LINES SOLICITED

Fire Insurance and Bonds 6 AND 7 EXCHANGE BUILDING

RATES, 50c, 75c and \$1.00. European Plan. SPECIAL RATES BY WEEK. Zenith Phone 1700.

## Hotel Astoria

MARTIN SMITH, Prop.

1st Ave. E. and Superior St. DULUTH, MINN.

Buffet and Cafe in Connection.

Both Brand New In Every Respect. Steam Heat, Bath and Electric Light. European Plan. Zenith Phone 795.

### The Nicollet Hotel

MARTIN SMITH, Prop.

518-520 West Superior Street. 517-519 West Michigan Street. Opposite Union Depot. DULUTH, Minn.

Rates, European, 50c, 75c and \$1 per day. Special Rates by the Week. FINE SAMPLE ROOM IN CONNECTION.

J. A. WATTERWORTH. H. FEE

## WATTERWORTH & FEE

Contractors and Builders

512-13-14 TORREY BLDG., DULUTH, MINN.

City Improvements Railroads Docks Bridges Foundations and Submarine Work

## Geo. R. King

Successor to Wolf & King

### CONTRACTOR

6 Mesaba Building, Duluth, Minn. Zenith Phone No. 395.

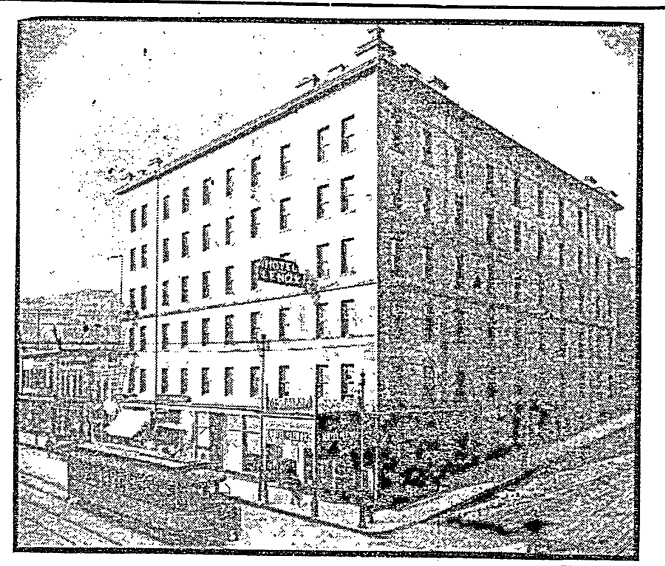


Photo by Maher.

**Duluth's New Hotel.**  
American Plan, \$2.00 and up. European Plan, \$1.00 and up.  
Running Water in Every Room. Five minutes from all depots, passenger docks and theaters.  
225 Rooms. Strictly Modern in every respect. 100 Rooms with Bath. Long Distance Phone in Every Room.  
Finest Dining Room in the Northwest. HIBENACK BROS., PROPS. Corner Sixth Avenue West and Superior St. DULUTH, MINN.

## Hotel Lenox

## METROPOLE HOTEL

CARGILL & KENNEY, Props.

EUROPEAN PLAN 50c TO \$2 PER DAY

EVERYTHING NEW

STRICTLY UP-TO-DATE

SPECIAL RATES TO THEATRE PEOPLE

INDIVIDUAL AND PUBLIC BATHS.

HOTEL ZENITH PHONE 905

CAFE DULUTH PHONE 195 L.

103 LAKE AVE. S. (Just off Superior St.) DULUTH, MINN.

## MARTIN BROS

### LUMBER

### RAILWAY SUPPLIES

GROSS TIES, BRIDGE TIES, SWITCH TIES, PILING, TELEGRAPH POLES, CEDAR POSTS.

Suite 616-617-618 Manhattan Building. Both Phones No. 196. DULUTH, MINN.