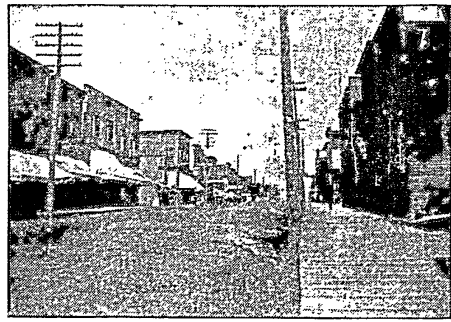
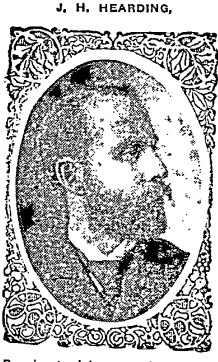


# EVELETH, HOME OF THE FAYAL, GREATTEST IRON ORE PRODUCER IN WORLD, ENJOYS BUSINESS ACTIVITY UNEXCELLED BY ANY NORTHERN MINNESOTA TOWN



VIEW OF GRANT AVENUE, EVELETH.



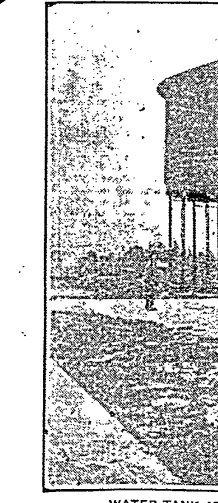
Prominent mining man of Eveleth and member of St. Louis County Poor Board.

Eveleth is one of the large and notable towns of the Mesaba range. It is a city and is flanked on one side by the famous Fayal mine and on another side by the great Adams-Spruce. The Fayal is the greatest producer in the world. Its record for the season of 1902 was 1,915,000 gross tons in round numbers. No other iron mine ever produced and shipped any such amount in one year. The Adams-Spruce is the greatest strictly underground iron mine in the world in point of production. A milling pit has been stripped on the Adams, and the property is now in better shape than ever to respond to the heavy demands for the mineral.

**Moved Village Off From a Mine.**  
The village of Eveleth some years ago was moved in order that the Spruce mine might be developed. The Spruce and the Adams are adjoining properties and being under the same management are now treated practically as one mine. The properties are connected by drifts underground. Adams ore may be hoisted through Spruce shafts, or vice versa. The Cloquet mine is another nearby property. These as well as the Fayal mine are controlled by the Oliver Iron Mining company. The policy of this company, which controls mines at many of the range towns, is the same



Village Trustee, Sparta.



WATER TANK AT IRON JUNCTION.

here as elsewhere. It is a policy that deals fairly, and even generously, with everybody that comes in contact with it. This is true of the individual and of the community. It is a policy of construction and encouragement in a multitude of ways. The same may appear to demand, or wisdom suggest. The strong arm of this great corporation exercises an influence for good in many ways beyond the mere paying out of its good wages as conditions will warrant. One may travel from Eveleth to Hovey and not hear a harsh word or complaint of the methods of the Oliver Iron Mining company. There are also true of other mining companies, but the mining division of the steel corporation, and the open pits are objects of special attention always.

The mines about Eveleth are just now giving employment to about 2,000 men, possibly more than this. The big new open pit at the Fayal is not yet in commission and will not be operated extensively this year. The mine is opened up above or under four forties. The area covered by operations at any one time at the Fayal gives the casual observer the impression that he is gazing upon what may perhaps be a couple of miles, at least. The underground operations are plainly indicated by shafts and stockpiles and railway tracks, and the open pits are of course in plain view.

There are three systems of mining in vogue at the Fayal, the underground, open pit steam shovel, and milling systems. The ground on the iron mines about Eveleth that has not been disturbed by mining operations is thickly studded with stumps. A great pine forest covers this territory, and it was for the pine that the land was bought and sold fifteen or sixteen years ago. Nobody at that time had any serious idea that iron ore was to be found in the neighborhood of the present site of the city of Eveleth. The land itself was considered to be of little or no value, especially if one had the tax laws in mind. Yet it has developed that the value of the pine was a mere bagatelle compared with the mineral wealth below the roots of the trees.

**Milling Pit of the Adams.**  
The milling pit on the Adams property, which was operated to some extent last season, and to greater extent this season, will be the largest on the Mesaba range. The mines about Eveleth will probably ship more ore this season than last, but the grand total may not be up to the mark of 1902. This means a heavy movement of the mineral. The ore produced at Eveleth is much in demand at the furnaces, and the assurance exists always that the mines about the city will always be active when there is nothing seriously depressing the iron industry. The Troy mine and other property close to Eveleth, lying just beyond the Fayal, it is operated by Pickens, Mather & Co. and covers the entire extent of the independent operators of mines on the Mesaba range.

**Comstock Built City.**  
Eveleth is compactly built city. Grant avenue is the principal business street, and for several blocks there is not a vacant lot, and there appears to be no stores for rent. The hotels, the average for cities of that size. The waterworks system is owned by the city and a new system is now approaching completion. The city has an abundance of good water to be so soon drawn upon. The city has heretofore depended upon the mines for water. A very good supply was secured in this manner, but was not wholly satisfactory. The water pumped from some of the iron mines on the Mesaba range is of very fine quality, and the water at Eveleth was good. But the city desired a more adequate supply and a better and more complete system, and it was decided

to extend the mains two and one-half miles. The new waterworks system has cost about \$50,000. The electric light system of Eveleth is owned by a private corporation. Eveleth is extending a very gratifying building growth, and in this connection, extensions of the water and sewer systems are being made as needed.

**Well Drilled Fire Department.**  
Eveleth has a well drilled and well equipped volunteer fire department of which a demerit, William Murray is chief. Eveleth has outgrown its present city hall and is to have a new one, to cost about \$12,000. It will also contain the city jail. The city already has a site for the hall on Pearce street, between Grant and Adams avenues.

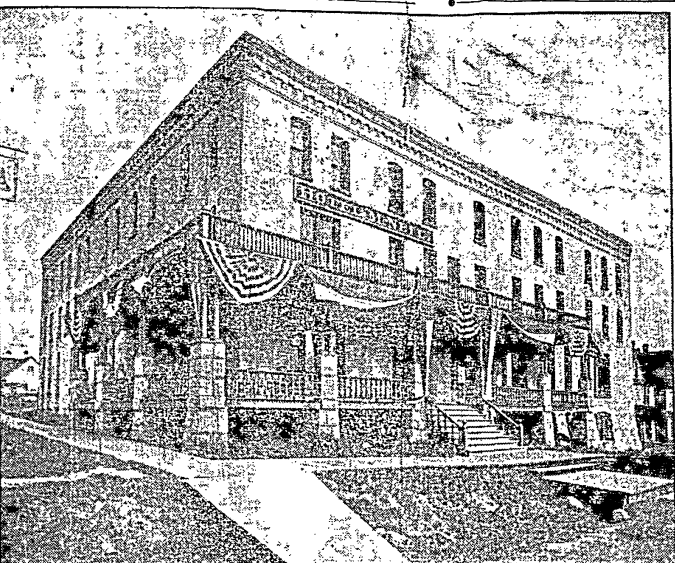
Eveleth is establishing a park on the hill adjoining the townsite on the north. It is proposed to create a fine beauty spot there. Parks are all too scarce in the mining towns of the ranges, but the people here have been pretty busy in the general city building, and besides, the towns are young. Tower is one of the best spots north of Duluth and its McKinley park is a product of very recent years. The City of Eveleth now includes the Fayal addition, not the mining location of Fayal, and Central division No. 1.

**Administration of Eveleth.**  
The officials of the City of Eveleth are as follows:  
Mayor, Mike Maxwell, aldermen, Matt Frotter, William Murray, Sam Gleason, Frank Mattson and Patrick McCloy; city clerk, Louis Larson; treasurer, Timothy Shea; assessor, J. Munk; attorney, N. B. Arnold, and engineer, Clarence Abbott. Patrick Dolan is chief of police. Dr. Price is judge of the municipal court.

The administration is progressive and moderately liberal. The city is satisfactory shape financially and on the whole is described as a well governed and progressive community. There is a Business Men's association, of which J. H. Hearing is president and George A. Whitman is president. The association exercises functions similar to the modern commercial club.

It may seem a little odd that a city of more than 6,000 people should have no cemetery, but such is the case at Eveleth. It is not that nobody ever dies there, for they do, but growth is so precious about Eveleth and the people have been waiting for the iron ore interests to find out where there is some land in which there is no ore before deciding on the purchase of a site for a cemetery. The people have witnessed the removal of the entire town on account of iron ore being under the city, and they think it best to slow down establishing a cemetery until they know that it is not going to be disturbed. In the meantime the citizens make use of the cemetery at Virginia.

**The High School Building.**  
A high school building, costing \$21,000, has just been completed. It was built by district No. 29, of which hearing is president and director, Walter Smith, clerk, and George Dormer, treasurer. The building is built on the site and the equipment will represent an outlay of about \$50,000. It is a beautiful building, and speaks abundantly of the attention that the people of the city and district are giving to educational matters. The building occupies a site on top of the hill two blocks from the McNeil hotel. The First National bank of the city was established five years ago. G. A. Whitman is president and R. M. Cornwall is cashier. The directors are all men of prominence in business or



HOTEL McNEIL, EVELETH.



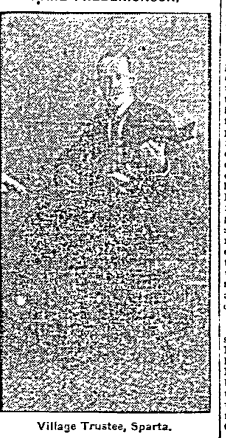
Representative of the 49th legislative district and proprietor of the Eveleth Star.

**FACTS ABOUT EVELETH, MINN.**  
City has a population of 6,332, and is growing steadily and substantially.  
One hundred and forty thousand dollars is distributed in wages every month.  
Two of the largest iron ore producing mines in the world are located there, the Fayal and the Adams-Spruce.  
Extensive iron ore deposits in the vicinity have been proved by drills but not yet opened up.  
Has two railroads, the Duluth, Mesaba & Northern and the Duluth & Iron Range.  
Has two good banks and many strong business concerns.  
Has a new high school building just completed that cost \$21,000.  
Has an extensive agricultural region that is tributary.  
Has a large and growing and go ahead class of business men.

the professions, and wealthy. They are G. A. Whitman, Max P. Shapiro, Dr. W. E. Harwood, O. D. Kinney, Senator E. B. Hawkins and J. W. Falk. The capital and surplus is \$55,000. The capital and surplus is the largest of any bank on the eastern Mesaba, and it is the oldest national bank on that range. Mr. Whitman, the president of the First National bank of Eveleth, is a well known and prosperous man. He is intimately acquainted with the



President, Village of Sparta.



Village Trustee, Sparta.



Representative of the 49th legislative district, resident of Sparta, and business man of both Sparta and Eveleth.

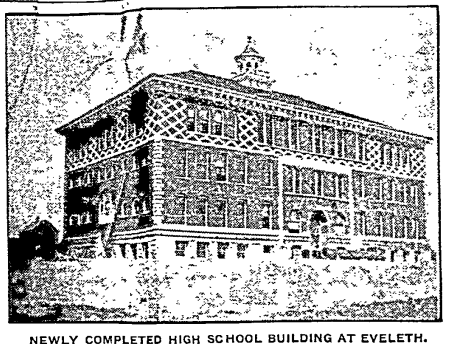
banking business and is one of the progressive men of the range. The First National bank of Eveleth, a large business.  
The Miners' National bank of Eveleth was established in 1902, with a capital of \$25,000. Its president is W. J. Smith, a young man who has already made his mark in the banking business. Mr. Smith started in the banking business at Bellevue, Ohio, and when he was asked to take the presidency of the new Miners' National was occupying the position of cashier of the First National of Eveleth. Previous to that he had been in the First National of Tower. The Miners' National, which is less than two years old, shows a surplus of \$1,000, and its business is steadily increasing. The institution is, in fact, doing a very prosperous business at the present time. The officers of the Miners' National bank are: President, W. J. Smith; vice-president, James Lobb, and cashier, Leo Shapiro. The directors are the officers, with the addition of R. E. Bailey, Dr. J. V. Johnson, J. C. McGilvery, N. B. Maxwell and Dr. F. W. Bullen.

**Many Lakes Near Eveleth.**  
Eveleth is fortunate in having a number of beautiful and well wooded lakes in its vicinity. Among these are Lily Lake, St. Mary's, Horseshoe, and Pleasant lake. A delightful outing for a day or a week according to one's time and disposition may be had at any one of these resorts. They are reached over good roads and people coming by motor or other than Eveleth to hold picnics and otherwise enjoy themselves.

The towns and cities on the Mesaba range are, as a rule, connected by good wagon roads. They are surfaced in many cases with lean iron ore and it takes a lot of rain and continuous wet weather to put them in bad condition. The road between Eveleth and Virginia is as good as can be found in the state, and it is much traveled. One may drive over a good road all the way between Eveleth and Hibbing. G. A. Whitman made the trip in a carriage a few days ago, and says that the road was good.

**Settlers Opening Up Lands.**  
Everybody in Eveleth that feels the promptness of punition, and most of them do, are interested in the possibilities of agriculture in the territory tributary to the city. Many settlers are opening up lands and a number of excellent farms have been developed. For example, William Minton owns a large farm three miles west of Eveleth. He has eighty acres cleared, has plenty of machinery for operating the farm, horses, cattle, poultry and hogs, and a \$2,000 house. There is much to be expected at Eveleth for the agricultural resources tributary to it, and the necessity of improved roads, and more of them, to assist in the settlement of the lands, is a matter of considerable interest at present. The people in the northern part of the county feel that the development of wild lands is certain to be rapid and the results of great importance. If a liberal and wise policy of road building is conducted for the next five or ten years.

**Phone Company Seeking a Home.**  
The Mesaba Telephone company is seeking to get a home of its own in Eveleth, on much the same basis as it has established itself in Virginia. F. E. Lester is the district superintendent and his headquarters is at Eveleth. His territory embraces Eveleth, Virginia and Hibbing. It is expected that a new building will soon be completed. Cable is on the ground for taking the



NEWLY COMPLETED HIGH SCHOOL BUILDING AT EVELETH.

place of most of the present individual wires in use. The company also expects to add about 20 miles of pole line in each of the cities of Virginia and Eveleth, to take care of the demands from new additions. The company is to rebuild the toll line between McKinley and Sparta. Four thousand feet of 3/4" aerial cable has been ordered for Bismark, to be strung between the exchange there and the business section. The Mesaba Telephone company has just installed five phones in the new village of Aurora. These telephones are connected with the Duluth exchange. The company also intends to erect an additional trunk circuit between Eveleth and Virginia. Telephone service is free between these towns and demands on it are extensive. It is not uncommon for 800 calls to be made between the two towns in a single day of ten hours. There are now six circuits between Eveleth and Virginia. The Mesaba Telephone company is a very progressive institution. It is keeping up with the times at every stage, and is installing the most modern equipment known to business for the use of the range people. There are 15 telephones in Eveleth. Eveleth has two weekly papers, the Eveleth Star and the Eveleth Mining News.